

Location and Ownership Data:

1. ODOT Field Division: 03	2. County: Seminole
3. Nearest City/Town: Wewoka	4. Facility Carried: E3632
5. Feature Intersected: Wewoka Creek & UP RR Under	6. Location: 1 N & 2.8 W OF WEWOKA
7. Former State/US Hwy: US 270	8. Latitude: 35.17434
9. Longitude: -96.54559	10. Bridge Owner: County Highway Agency
11. Replacement Project Number or J/P Number (if applicable): N/A	

Bridge Data:

12. Bridge Type: Deck Truss	
13. Bridge Material: Steel	
14. Main Span Configuration (if applicable): Warren with Verticals	
15. Construction Date: 1927	16. Source of Date: NBI and ODOT Spans of Time
17. Designer/Builder: Gaines, Yeokum & Mackey	
18. Total Structure Length (in feet): 386.00	19. Number of Lanes: 2
20. Total Width (in feet): 21.00	21. Curb-to-Curb Width (in feet): 18.00
22. Number of Main Spans: 2	23. Length of Maximum Span (in feet): 102.00
24. Information on Bridge Plate/Stamp (if applicable): N/A	
25. Number of Approach Spans: 5	

Approach Span Details (if no approach spans, skip to 30):

26. Approach Span Type 1: Type/Configuration (if applicable): Stringer/Multi-beam or Girder
27. Approach Span Type 1: Length (in feet): 37,36,33,37
28. Approach Span Type 2: Type/Configuration (if applicable): Concrete beam
29. Approach Span Type 2: Length (in feet): 40

Substructure Details:

30. Abutment Material(s): Concrete
31. Wing Wall Material(s) (if applicable): Concrete
32. Pier Type(s) (if applicable): Solid Pier
33. Pier Material(s) (if applicable): Concrete

Truss Bridge Details (if non-truss, skip to 41):

34. Connection Type: Riveted	35. End Post Type: Vertical
36. Top Chord Type: Built up	
37. Bottom Chord Type: Built up	
38. Verticals Type: Built up	

39. Diagonals Type: Built up**40. Counters Type:** None**Additional Bridge Details:****41. Additional Bridge Details:**

Some damage to concrete railing.

Alterations:**42. Alterations:**

No known alterations.

National Register of Historic Places Evaluation:**43. Statement of Significance:**

This bridge has significance under Criterion A for its association with important trends or events that have made a significant contribution to the broad patterns of Oklahoma history. Its significance is demonstrated as an example of a vehicular bridge specifically constructed as part of the development of oil fields in Oklahoma, which resulted in subsequent regional growth. This bridge was constructed in 1927 in reaction to the sudden traffic congestion in the area around the Seminole Oil Fields, which had experienced major oil strikes one year earlier ("Highway Outlet Furnished Thru R. R. Overpass," Seminole County News, June 9, 1927). This bridge also has significance under Criterion C in the area of Engineering. The bridge displays characteristics of a type, period, or method of construction that are distinctive among Oklahoma's bridge population. Its significance is also demonstrated as an example of a Warren deck truss, a distinctive and rare bridge type. Research did not reveal potential significance for this property under Criterion B: Significant Person or Criterion D: Information Potential.

44. Integrity:

This bridge has minor impact damage to railing, but is still able to demonstrate significance. This bridge retains integrity.

45. Recommendation:

Eligible.

46. Surveyor: Mead & Hunt, Inc.**47. Survey Date:** 1/9/2020



OKLAHOMA HISTORIC BRIDGE INVENTORY FORM

NBI Number: 01940 Structure Number: 67N3632E1270000

County: Seminole Feature Carried: E3632

Feature Intersected: Wewoka Creek & UP RR Under



Photographs:



*Photograph Date: January 9, 2020
Camera Direction: E*



*Photograph Date: January 9, 2020
Camera Direction: NW*



OKLAHOMA HISTORIC BRIDGE INVENTORY FORM

NBI Number: 01940

Structure Number: 67N3632E1270000

County: Seminole

Feature Carried: E3632

Feature Intersected: Wewoka Creek & UP RR Under



Photographs:



*Photograph Date: January 9, 2020
Camera Direction: NW*



*Photograph Date: January 9, 2020
Camera Direction: NE*



OKLAHOMA HISTORIC BRIDGE INVENTORY FORM

NBI Number: 01940

Structure Number: 67N3632E1270000

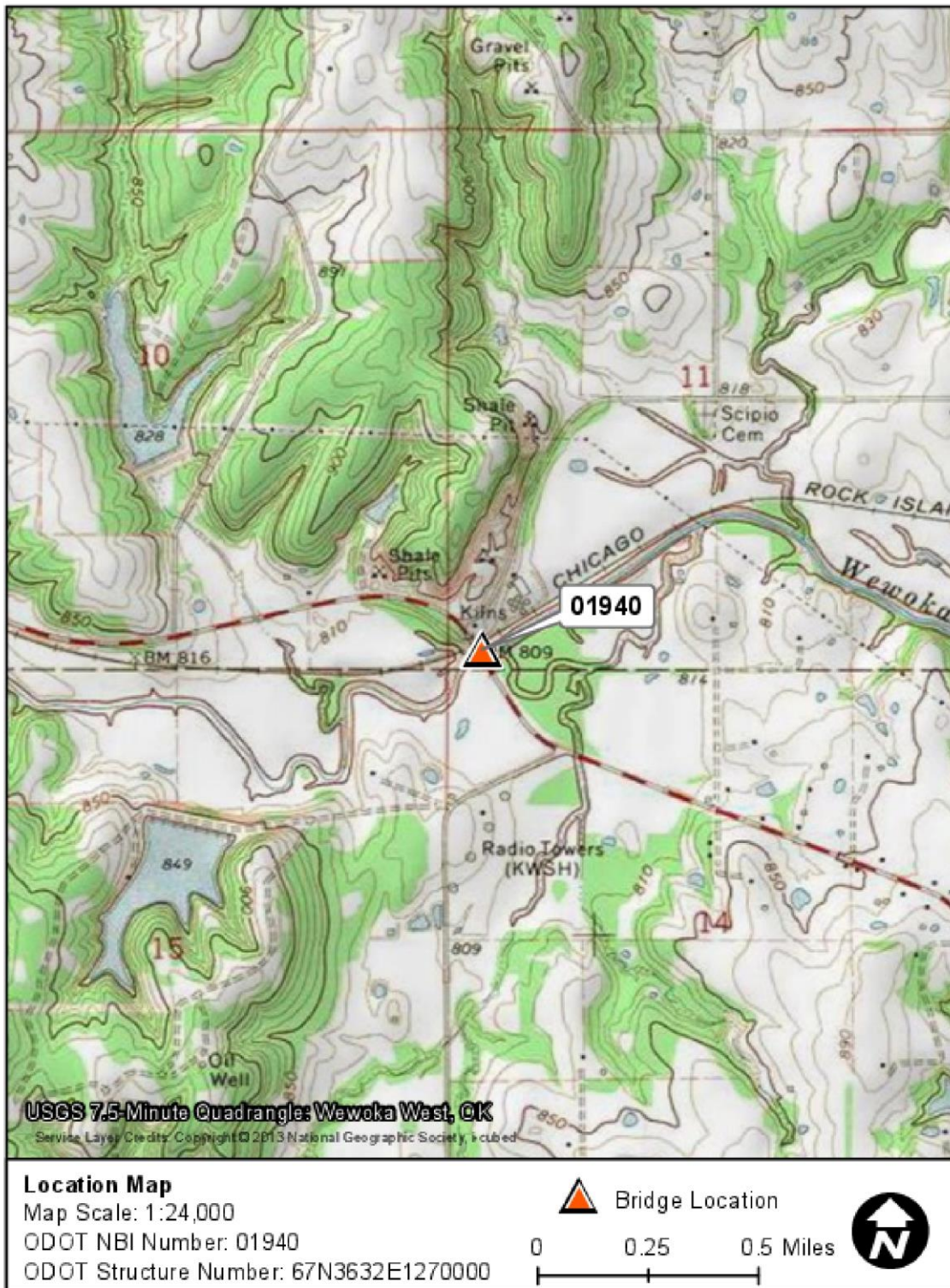
County: Seminole

Feature Carried: E3632

Feature Intersected: Wewoka Creek & UP RR Under



Maps:





OKLAHOMA HISTORIC BRIDGE INVENTORY FORM

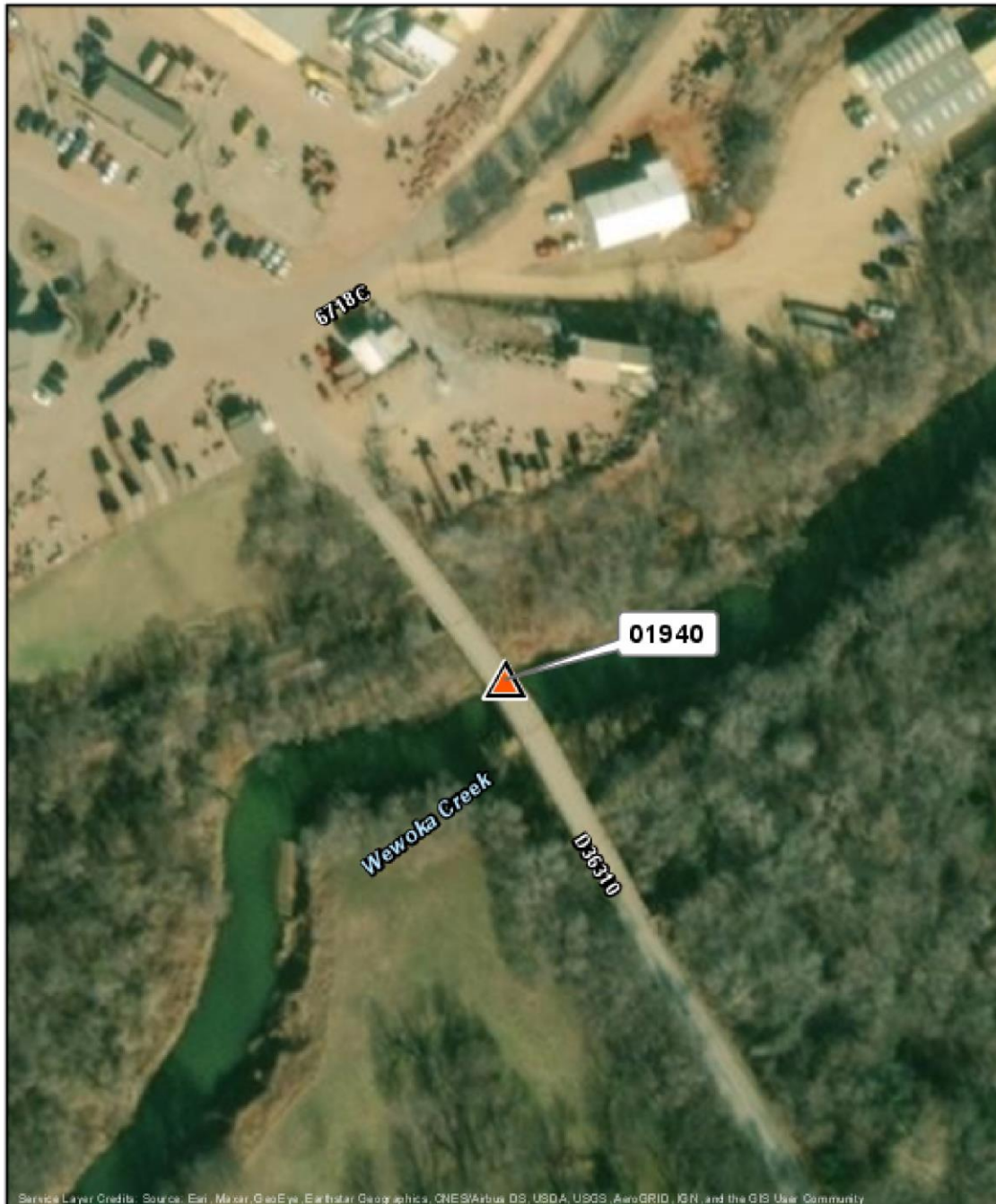
NBI Number: 01940 Structure Number: 67N3632E1270000

County: Seminole Feature Carried: E3632

Feature Intersected: Wewoka Creek & UP RR Under



Maps:




Service Layer Credits: Source: Esri, Maxar, GeoEye, Earthstar Geographics, CNES/Airbus DS, USDA, USGS, AeroGRID, IGN, and the GIS User Community

Site Map (aerial)

ODOT NBI Number: 01940

ODOT Structure Number: 67N3632E1270000

 Bridge Location

0 50 100 200 Feet

