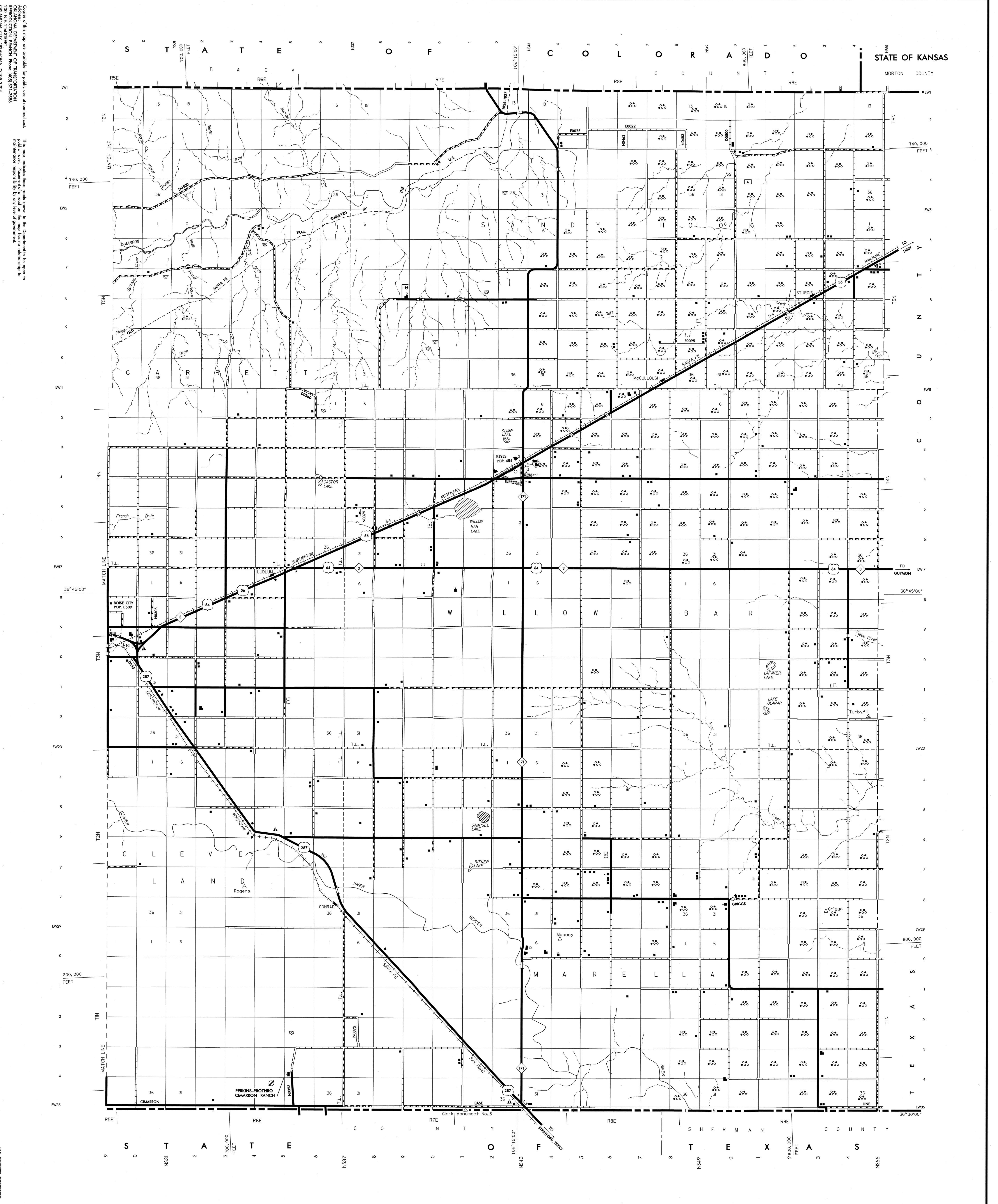


No Truss or Concrete/Masonry Bridges on this Map

CIMARRON COUNTY OKLAHOMA  
GENERAL HIGHWAY MAP  
NOT FOR RESALE  
ALL RIGHTS RESERVED  
COMPUTER GENERATED



**LEGEND**

<ul style="list-style-type: none"> <li>U.S. NUMBERED HIGHWAY</li> <li>STATE NUMBERED HIGHWAY</li> <li>INTERSTATE HIGHWAY ROUTE</li> <li>PAVED ROAD</li> <li>GRAVEL ROAD</li> <li>GRANDED &amp; DRAINED ROAD</li> <li>UNPAVED ROAD</li> <li>PRIMITIVE ROAD</li> <li>PROJECTED ROAD</li> <li>RESIDENTIAL ROAD</li> <li>COUNTY ROAD (C) NO.</li> <li>0.1 0.2 0.3 MILEAGE BETWEEN POINTS</li> <li>DIVIDED HIGHWAY, 4 OR MORE LANES</li> <li>UNDIVIDED HIGHWAY, 3 OR MORE LANES</li> <li>TRAFFIC CIRCLE</li> <li>HIGHWAY GRADE SEPARATION</li> <li>TRAFFIC INTERCHANGE</li> <li>STATE LINE</li> <li>COUNTY LINE</li> <li>COUNTY SEAT</li> <li>COUNTY TOWNSHIP LINE</li> <li>SECTION LINE</li> <li>RURAL DEVELOPMENT AREA</li> <li>GOVERNMENT PROPERTY LINE</li> <li>POST OFFICE</li> <li>POST OFFICE COMBINATIONS</li> </ul>	<ul style="list-style-type: none"> <li>RAILROAD, ANY NUMBER OF TRACKS</li> <li>RAILROAD WITH STATION INDICATED</li> <li>GRADE CROSSING</li> <li>UNDERPASS, R.R. ABOVE</li> <li>OVERPASS, R.R. BELOW</li> <li>RAILROAD ON STREET</li> <li>MILITARY AIRFIELD</li> <li>AIRPORT WITH COMPLETE FACILITIES</li> <li>AIRPORT WITH LIMITED FACILITIES</li> <li>LANDING STRIP, PRIVATE FIELD</li> <li>AIRPORT, RUNWAYS SHOWN IN POSITION</li> <li>ROADSIDE PARK, Picnic Grounds</li> <li>PLAYGROUNDS</li> <li>BATHING BEACH OR SWIMMING POOL</li> <li>SCENIC SITE</li> <li>NOTE</li> <li>CAMP OR LODGE, Permanent with buildings</li> <li>SMALL PARK</li> <li>FOREST BARRICADE STATION</li> <li>OBSERVATION OR LOOKOUT TOWER</li> <li>CAMP SITE</li> <li>FISH HATCHERY</li> <li>GOLF COURSE OR COUNTRY CLUB</li> <li>ATHLETIC FIELD OR AMUSEMENT PARK</li> <li>FABRICATORS, RACE COURSE</li> <li>DWELLING</li> <li>NUMBER OF DWELLINGS CLOSELY SPACED</li> <li>COMBINED BUSINESS AND DWELLING</li> <li>POST OFFICE</li> <li>POST OFFICE COMBINATIONS</li> </ul>	<ul style="list-style-type: none"> <li>ELEVATION ABOVE SEA LEVEL</li> <li>MOUNTAIN RANGE, BUTTE OR MESA</li> <li>SMALL MONUMENT</li> <li>MARSH OR SWAMP LANDS</li> <li>DRAINAGE DITCH</li> <li>IRRIGATION DITCH</li> <li>LAKE, RESERVOIR OR POND WITH DAM</li> <li>ROAD OVER DAM</li> <li>DRY LAKE SUBJECT TO FLOOD</li> <li>SMALL BRIDGES CLOSELY SPACED</li> <li>HIGHWAY BRIDGE, OVER 20FT. IN LENGTH</li> <li>GENERAL BRIDGE, LONG, CROSSING</li> <li>ARCH BRIDGE</li> <li>TRUSS BRIDGE, WOODS-STEEL-CONCRETE</li> <li>CONCRETE DIP OR FORD</li> <li>FORD, ROAD ESTABLISHED</li> <li>INTERMITTENT STREAM</li> <li>NARROW STREAM</li> <li>DOCK, PIER OR LANDING</li> <li>NAVIGABLE STREAM WITH LOCK &amp; DAM</li> <li>WIDE STREAM OR RIVER</li> <li>TRANSLATION STATION</li> <li>HISTORICAL SITE</li> </ul>	<ul style="list-style-type: none"> <li>SEASONAL DWELLINGS</li> <li>CHURCH OR OTHER RELIGIOUS BUILDING</li> <li>CEMETERY</li> <li>CHURCH WITH CEMETERY ADJACENT</li> <li>REST HOME</li> <li>HOSPITAL</li> <li>SMALL BUSINESS</li> <li>INDUSTRY</li> <li>SAW MILL</li> <li>MINE SHAFT OR DRIFT</li> <li>OIL OR GAS FIELD</li> <li>GALVANIZING OR PUMPING STATION</li> <li>WAREHOUSE</li> <li>GRAVEL PIT</li> <li>QUARRY</li> <li>SCHOOL</li> <li>COMMUNITY HALL OR LODGE</li> <li>DRIVE-IN THEATER</li> <li>CORRECTIONAL INSTITUTION</li> <li>HIGHWAY GARAGE</li> <li>PARK YARDS &amp; DUMPS</li> <li>A-Automobile</li> <li>B-Scrap Building Material</li> <li>C-Battery, Garbage or trash dump</li> <li>D-Sewage Pits, G-Other</li> <li>SEWAGE DISPOSAL PLANT</li> <li>WATER SUPPLY STAND PIPE</li> <li>POWER PLANT</li> <li>BOOSTER STATION</li> <li>TELEVISION OR RADIO STATION</li> <li>MILITARY INSTALLATION</li> </ul>
---	--	--	--

ALL DATA CURRENT TO DATE OF INVENTORY JULY 1998  
 ORIGINAL DRAWING BY A.L.B. AUGUST 1999  
 STATE SYSTEM REVISED TO JULY 1998

**GENERAL HIGHWAY MAP  
CIMARRON COUNTY  
OKLAHOMA**  
 PREPARED BY THE  
**OKLAHOMA DEPARTMENT OF TRANSPORTATION  
PLANNING DIVISION**  
 IN COOPERATION WITH THE  
**U.S. DEPARTMENT OF TRANSPORTATION  
FEDERAL HIGHWAY ADMINISTRATION**

SCALE IN MILES  
 SCALE IN KILOMETERS  
 LAMBERT CONFORMAL CONIC PROJECTION U.S. & GEODETIC SURVEY DATA  
 20,000 FOOT GRID, OKLAHOMA PLANE COORDINATE SYSTEM NORTH PROJECTION ZONE  
 POPULATION FIGURES BASED ON 1990 U.S. CENSUS  
 CO. POP. 3,201