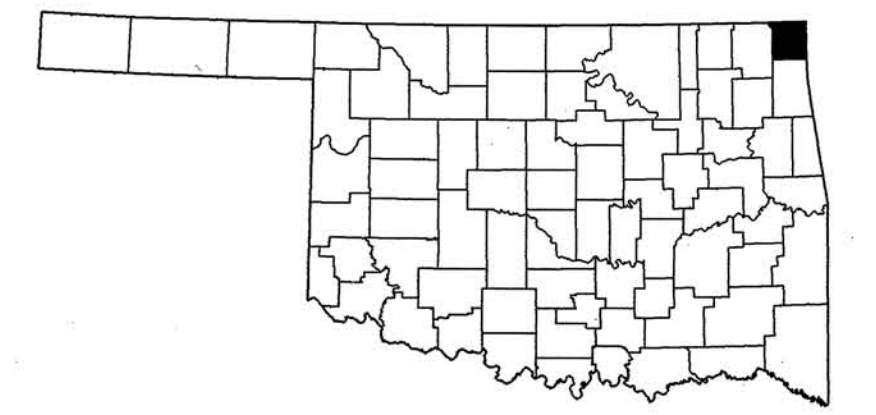
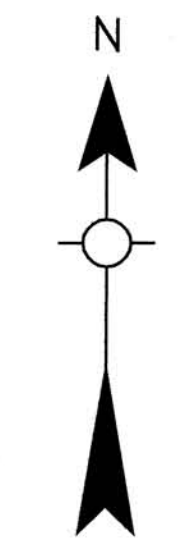
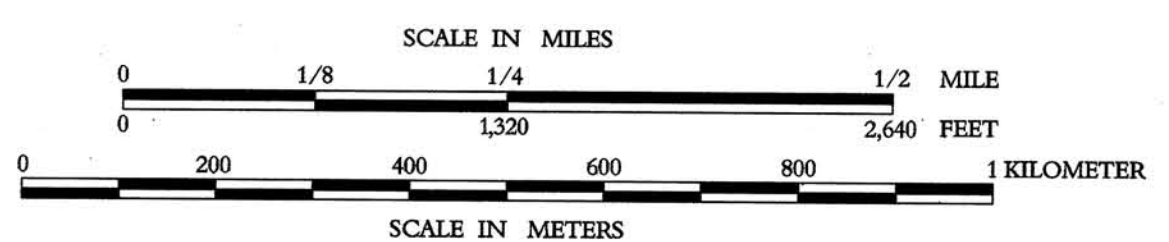
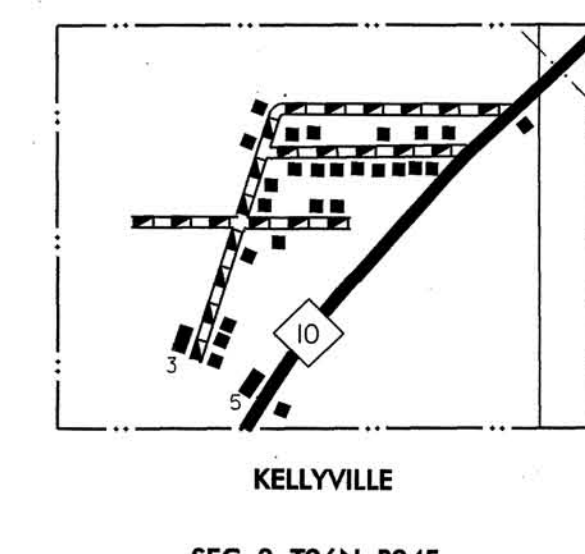
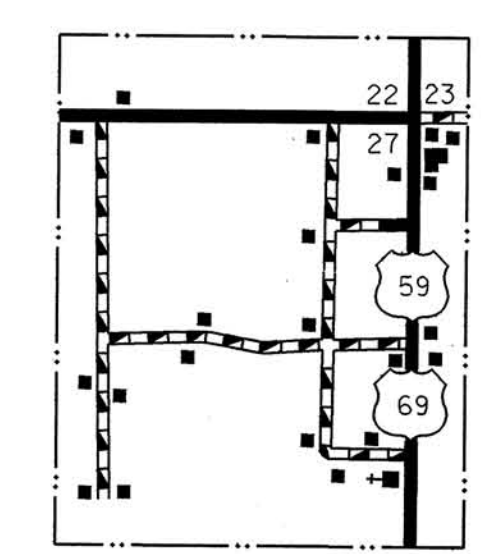
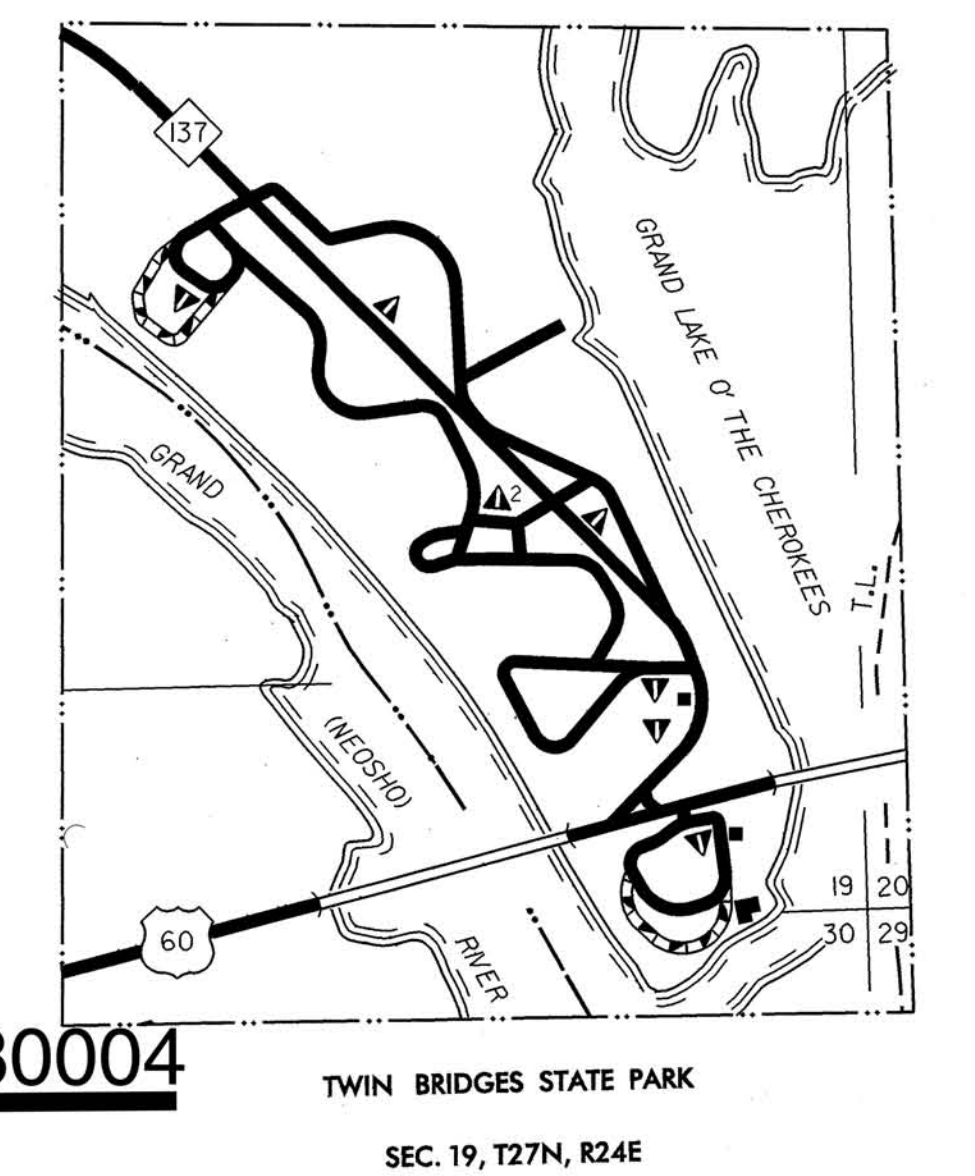
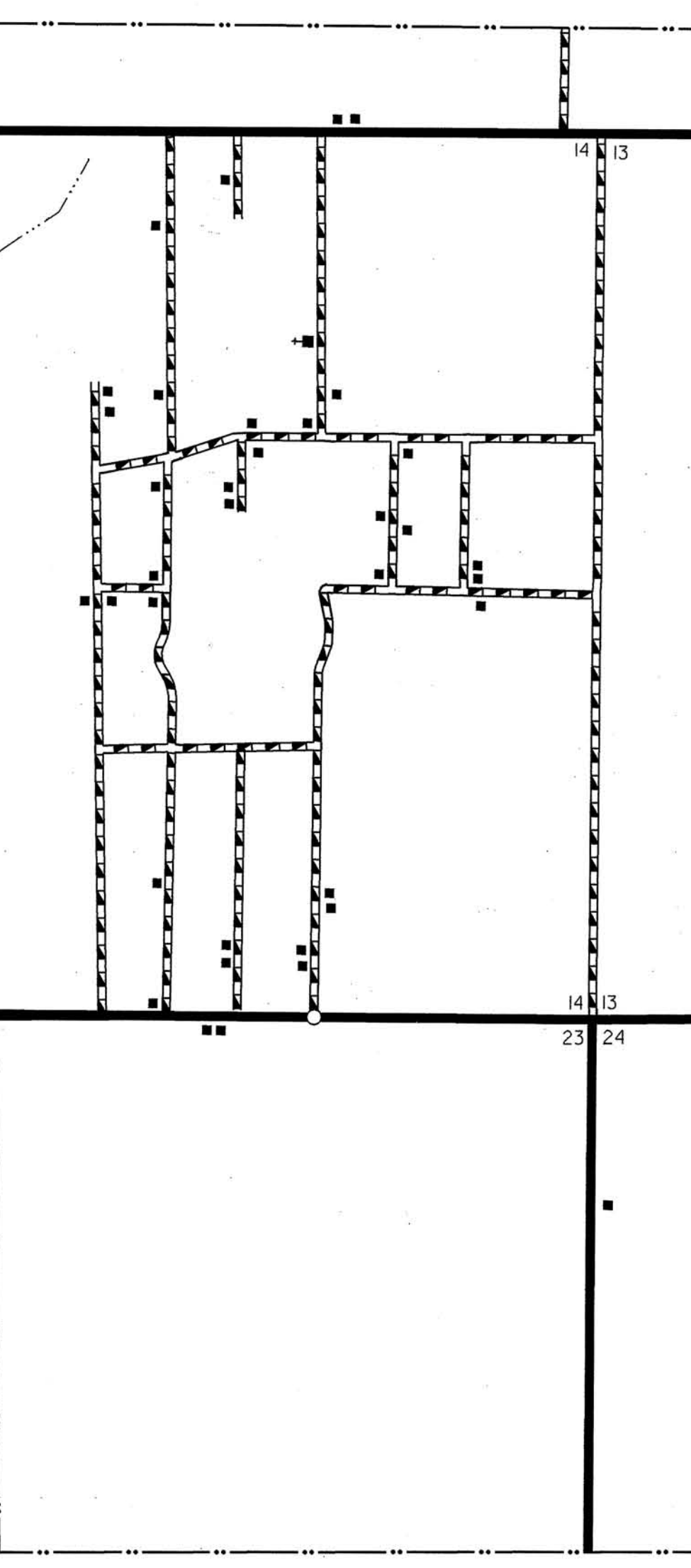


- LEGEND**
- U.S. NUMBERED HIGHWAY
  - STATE NUMBERED HIGHWAY
  - INTERSTATE HIGHWAY ROUTE
  - PAVED ROAD
  - GRAVEL ROAD
  - GRADED & DRAINAGE ROAD
  - UNIMPROVED ROAD
  - PRIMITIVE ROAD
  - PROJECTED ROAD
  - RESIDENTIAL ROAD
  - COUNTY ROAD ID NO.
  - MILEAGE BETWEEN POINTS
  - DIVIDED HIGHWAY, 4 OR MORE LANES
  - UNDIVIDED HIGHWAY, 3 OR MORE LANES
  - TRAFFIC CIRCLE
  - HIGHWAY GRADE SEPARATION
  - TRAFFIC INTERCHANGE
  - STATE LINE
  - COUNTY LINE
  - CIVIL TOWNSHIP LINE
  - SECTION LINE
  - RURAL DEVELOPMENT AREA
  - GOVERNMENT PROPERTY LINE
  - MATCH LINE
  - COUNTY SEAT
  - TOWN CENTER
  - CORPORATE LIMITS
  - CIVIL TOWNSHIP, ROAD IN PLACE
  - INSET BOUNDARY
  - ELEVATION ABOVE SEA LEVEL
  - CHURCH OR OTHER RELIGIOUS BUILDING
  - MOUNTAIN RANGE, BUTTE OR MESA
  - SMALL MONUMENT
  - MARSH OR SWAMP LANDS
  - GRAINAGE DITCH
  - IRRIGATION DITCH
  - LAKE, RESERVOIR OR POND WITH DAM
  - ROAD OVER DAM
  - DRY LAKE SUBJECT TO FLOOD
  - SMALL BRIDGES, CLOSELY SPACED
  - HIGHWAY BRIDGE, OVER 20FT. IN LENGTH
  - GENERAL BRIDGE, LONG CROSSING
  - ARCH BRIDGE
  - TRUSS BRIDGE, W-WOOD, S-STEEL, C-CONCRETE
  - CONCRETE DIP OR FORD
  - FORD ROAD ESTABLISHED
  - INTERMITTENT STREAM
  - NARROW STREAM
  - DOCK PIER OR LANDING
  - NAVIGABLE STREAM WITH LOCK & DAM
  - WIDE STREAM OR RIVER
  - TRIANGULATION STATION
  - RAILROAD, ANY NUMBER OF TRACKS
  - RAILROAD WITH STATION INDICATED
  - CROSSING
  - UNDERPASS, R.R. ABOVE
  - OVERPASS, R.R. BELOW
  - RAILROAD ON STREET
  - MILITARY AIRFIELD
  - AIRPORT WITH COMPLETE FACILITIES
  - AIRPORT WITH LIMITED FACILITIES
  - LANDING STRIP, PRIVATE FIELD
  - AIRPORT, GENERAL OUTLINE OF FIELD
  - RUNWAYS SHOWN IN POSITION
  - ROADSIDE PARK Picnic Grounds
  - PLAYGROUND
  - BATHING BEACH OR SWIMMING POOL
  - SCENIC SITE
  - MOTEL
  - CAMP OR LODGE, Permanent with buildings
  - SMALL PARK, NP-Municipal, TP-Trotter Park
  - FOREST RANGER STATION
  - OBSERVATION OR LOOKOUT TOWER
  - CAMP SITE
  - FISH HATCHERY
  - GOLF COURSE OR COUNTRY CLUB
  - ATHLETIC FIELD OR AMUSEMENT PARK
  - PATROUNDS, RACE COURSE
  - CHURCH OR OTHER RELIGIOUS BUILDING
  - NUMBER OF DWELLINGS CLOSELY SPACED
  - COMBINED BUSINESS AND DWELLING
  - POST OFFICE
  - POST OFFICE COMBINATIONS
  - SEASONAL DWELLINGS
  - CHURCH OR OTHER RELIGIOUS BUILDING
  - CEMETERY
  - CHURCH WITH CEMETERY ADJACENT
  - REST HOME
  - HOSPITAL
  - SMALL BUSINESS
  - INDUSTRY
  - SAW MILL
  - MINE SHANTY OR DRIFT
  - OIL OR GAS FIELD
  - GALVANIZING OR PUMPING STATION
  - WAREHOUSE
  - GRAVEL PIT
  - QUARRY
  - SCHOOL
  - COMMUNITY HALL OR LODGE
  - DRIVE-IN THEATER
  - CORRECTIONAL INSTITUTION
  - HIGHWAY GARAGE
  - YARD & DUMPS A-Automobile, B-Scrap Building Material, C-Other
  - F-Sanitary Fill, G-Other
  - SEWAGE DISPOSAL PLANT
  - WATER SUPPLY STAND PIPE
  - POWER PLANT
  - BOOSTER STATION
  - POWER SUBSTATION
  - TELEVISION OR RADIO STATION
  - MILITARY INSTALLATION

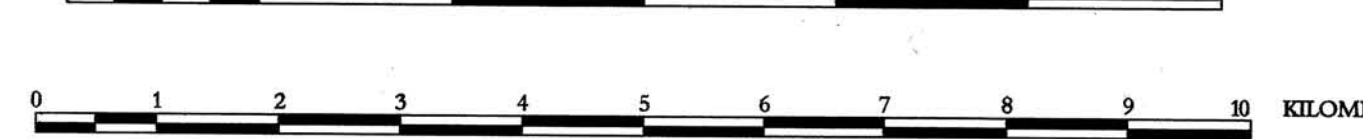


# GENERAL HIGHWAY MAP OTTAWA COUNTY OKLAHOMA

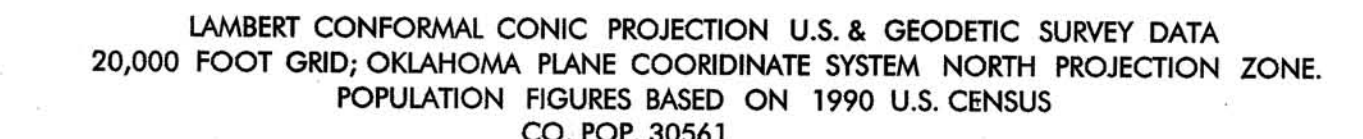
PREPARED BY THE  
OKLAHOMA DEPARTMENT OF TRANSPORTATION  
PLANNING DIVISION

IN COOPERATION WITH THE  
U.S. DEPARTMENT OF TRANSPORTATION  
FEDERAL HIGHWAY ADMINISTRATION

SCALE IN MILES



SCALE IN KILOMETERS



Copies of this map are available for public use at nominal cost. This map indicates those roads known to the Department to be open to public travel. Placement of a road on the map has no relationship to maintenance responsibility by any level of government.

Address:  
OKLAHOMA DEPARTMENT OF TRANSPORTATION  
REPRODUCTION BRANCH Phone (405) 521-2386  
200 N.E. 21st STREET  
OKLAHOMA CITY, OKLAHOMA 73105-3204

ALL DATA CURRENT TO  
DATE OF INVENTORY  
JULY 1997  
ORIGINAL DRAFTING BY M.L.B. JANUARY 1998  
STATE SYSTEM REVISED TO JAN. 1998

ALL RIGHTS RESERVED COMPUTER GENERATED

NOT FOR RESALE