

FINLEY, OKLAHOMA
SEC. 2, T.35, R.17E
SCALE
0 0.1 0.2 0.3 0.4 0.5 0.6 0.7 0.8 0.9 1.0 MILE
0 1,340 2,640 5,280 FEET

64N4095E1755000

64N4250E170008

64N4150E188008

6404 1172 X

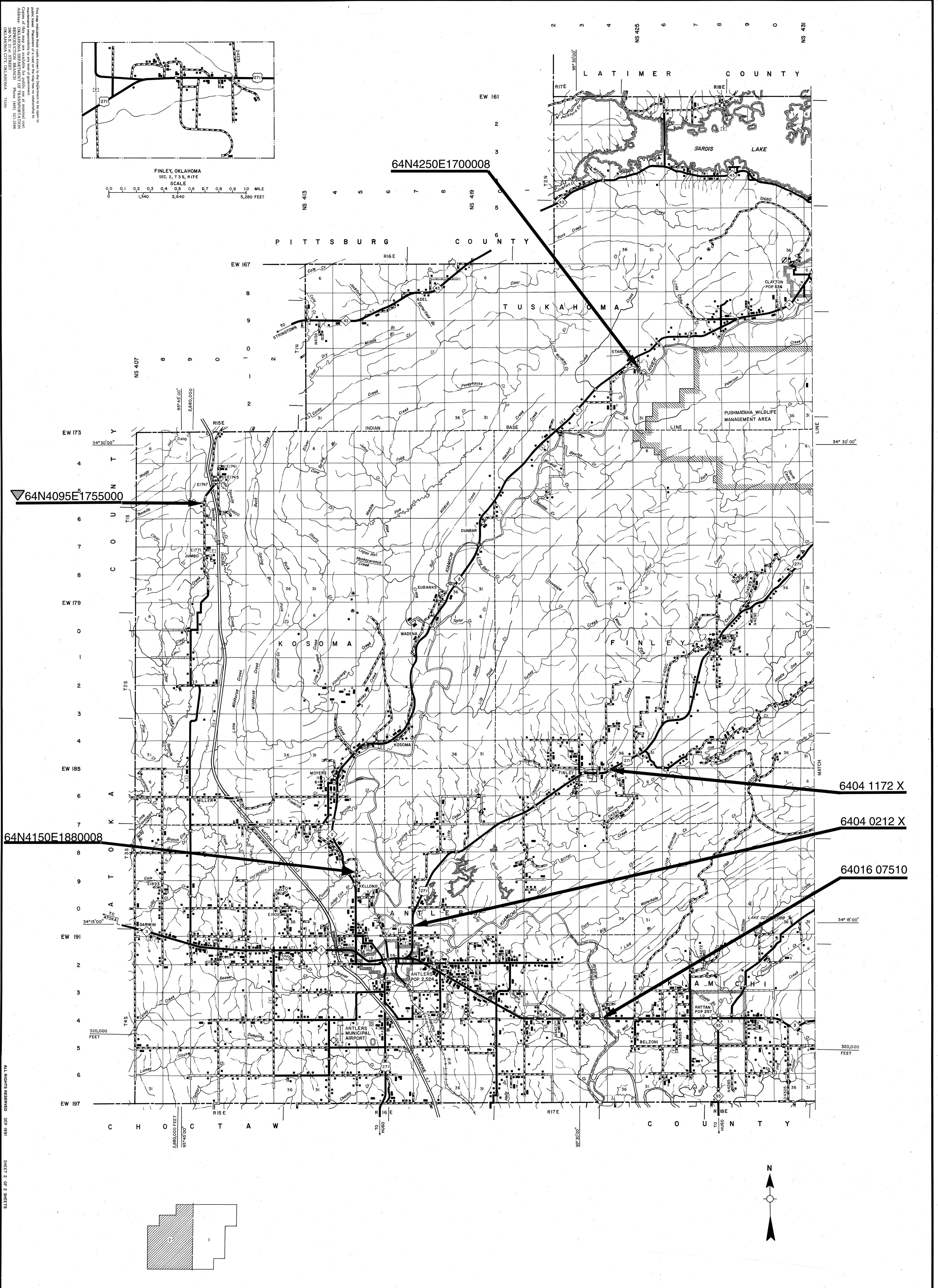
6404 0212 X

64016 07510

NOT FOR RESALE

GENERAL HIGHWAY MAP PUSHMATAHA COUNTY OKLAHOMA

64



PUSHMATAHA NO.2

This map indicates those roads known to the Department to be open to public travel. Placement of a road on this map does not constitute a guarantee of its condition or of its availability for public use at all times. Copies of this map are available for public use at nominal cost. Address: OKLAHOMA DEPARTMENT OF TRANSPORTATION, 200 N.E. 21st STREET, OKLAHOMA CITY, OKLAHOMA 73109

ALL RIGHTS RESERVED 1979 1991

SHEET 2 OF 2 SHEETS